

# Daylight Saving Time and Your DVR System



The new change to Daylight Saving time will not affect your DVR system's ability to record video. Your system's time will be off by one hour until you either manually change time or apply a software patch to the operating system.

**NOTE: If you choose not to apply the patch, you will need to manually change the time on your DVR four times a year.**

## Step 1 Shut Down Surveillance Software



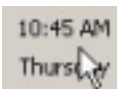
Shut down your DVR software by clicking on the exit button in the lower right hand corner of your DVR screen.

## Step 2 Options

After the DVR software completely shuts down, you will see a standard Microsoft Windows desktop. To manually change time, continue to step 3. If you will be applying the software patch, proceed to step 5.

**NOTE: The patch can be downloaded directly from our website at:**  
<http://www.rftechno.com/patch/WindowsXP-KB931836-X86-ENU.exe> 

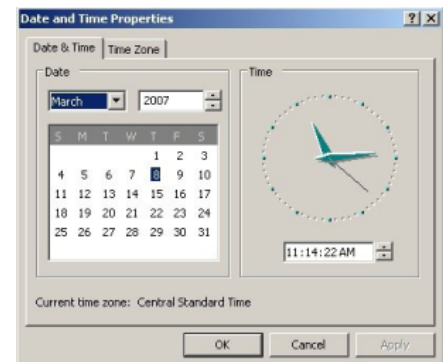
## Step 3 Manual Time Change



TIME DISPLAY  
Double click on the time displayed in the lower right hand side of your screen.

## Step 4 Changing Time

Change your time with "Date and Time Properties" box. Click "OK" on the "Date and Time Properties" box. It will close and you will be back to the Windows desktop. To start your DVR software again, go to Step 6.



## Step 5 Applying The Patch

**NOTE: The patch can be downloaded directly from our website at:**  
<http://www.rftechno.com/patch/WindowsXP-KB931836-X86-ENU.exe>

Once you have downloaded the patch onto your DVR you will run "WindowsXP-KB931836-x86-ENU.exe" file. Double click to begin the patching process. Please follow the on-screen prompts to complete the patch.

After patching is completed, delete patch file.

## Step 6 Start Your DVR Software

Double click on the DVR Main icon on the top left corner of the desktop.

