

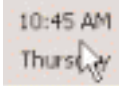
SYSTEM TIME ADJUSTMENT

Step 1 Shut Down Surveillance Software



Shut down DVR software by clicking the exit button in the lower right hand corner of DVR screen.

Step 2 Time Change

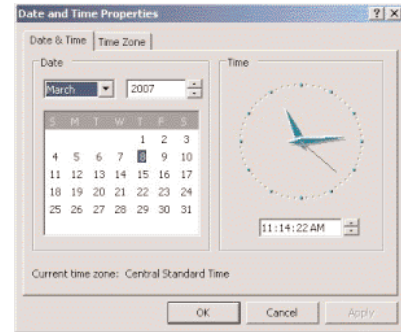


TIME DISPLAY

Double click the time displayed in the lower right hand side of screen.

Step 3 Changing Time

Change time with "Date and Time Properties" box. Click "OK" on the "Date and Time Properties" box. It will close and you will be back to the Windows desktop.



Step 6 Start Your DVR Software



DVR Main

Double click the DVR Main icon on the top left corner of the desktop.

Notes:

GLOSSARY OF TERMS

AMPS Also known as Ampere. Unit of measure for the flow of electricity

AVI Audio Video Interleave

BAUD RATE Variable unit of data transmission speed

CCD Charge Coupled Device

CCTV Closed-Circuit Television

CD Compact Disc

CD-R Compact Disc, Readable

CD-RW Compact Disc, Re-Writable

CODEC Compression/Decompression

DNS Domain Name Server.

DVR Digital Video Recorder

DYNAMIC IP A temporary IP address provided by your ISP

FPS Frames Per Second

IP Internet Protocol

ISP Internet Service Provider

LAN Local Area Network

LCD Liquid Crystal Display

MP4 MPEG Layer 4

MP4+EXE MPEG Layer 4 plus Executable

NTSC National Television Standards Committee

POS Point Of Sale

STATIC IP A permanent IP address provided by your ISP.

TCPIP Transmissions Control Protocol Internet Protocol

VOLTAGE Electric potential or potential difference

WAN Wide Area Network